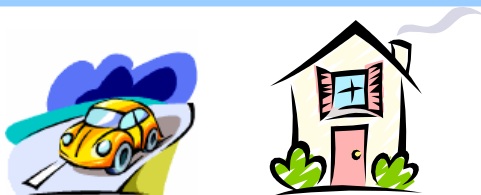




# Buying a house or a car? ... Applying for a loan? ... Leasing an apartment?

You'll need proof of employment or income...



For Fast, Secure, Anytime-Anywhere Proof of Employment or Income via the Web or phone we bring you ... The Work Number®.

The Work Number service is used when you apply for a loan, need a reference check, lease an apartment or any other instance where proof of employment or income is needed. You benefit from having control of the process – by authorizing others access to your information.

## How it works...

Need proof of employment?

### Follow these easy steps:

- 1) Print this page and follow the steps below to obtain proof of employment.
- 2) Write down your Social Security Number in the boxes below.
- 3) Give the information in Box 1 to the person requesting your proof of employment.

### Box 1 – Provide this information to the person requesting proof of your employment.

To obtain proof of **employment** on an employee from San Diego City Schools:

- 1) Access The Work Number either via:
  - <http://www.theworknumber.com/Verifiers>
  - **1-800-367-5690**
- 2) Enter:
  - The San Diego City Schools Employer Code is: 10406
  - The employee's Social Security Number:

□□□ - □□ - □□□□ ◀

**Client Service Center: 1-800-996-7566 (Voice), 1-800-424-0253 (TTY – Deaf)  
Monday-Friday, 7 a.m. - 8 p.m. (CST)**

\*Note: The employee will need to provide you with a Salary Key in order for you to also verify their income.

**Need proof of employment  
plus income?**

**Follow These Easy Steps:**

- 1) Print this page and follow the steps below to obtain proof of employment plus income.
- 2) Write down your Social Security Number in the boxes below
- 3) Go to The Work Number either:
  - <http://www.theworknumber.com/Employees>
  - **1-800-367-2884**
- 4) Enter the following information:
  - a) The San Diego City Schools Employer Code is: 10406
  - b) Your Social Security Number:    -   -
  - c) Your PIN (last 4 of your SSN): \_\_\_\_\_
- 5) Select to obtain a Salary Key and write down the Salary Key provided to you by The Work Number
- 6) Give the information in Box 2 to the person requesting proof of your employment plus Income

**Box 2 – Provide this information to the person requesting proof of your employment plus income.**

To obtain proof of **employment** plus **income** on an employee from San Diego City Schools:

- 1) Access The Work Number either via:
  - <http://www.theworknumber.com/Verifiers>
  - **1-800-367-5690**
- 2) Enter:
  - The San Diego City Schools Employer Code is: 10406
  - The employee's Social Security Number:    -   -     ←
- 3) Enter in the **Salary Key** provided to you by the employee:       ←

**TALX Client Service Center**

Monday-Friday, 7 am - 8 pm (CST)

**1-800-996-7566**

(TTY-Deaf)

**1-800-424-0253**